

Bassus

Musicalische
GESELLSCHAFTS-ERGETZUNG
(1673)

[SUITE N° 1 in b minor]

1. Sonata.

Adagio.

Esaias Reusner



34



39



44

Adagio

49



55

Repet: Trip:

**2. Allemanda.**

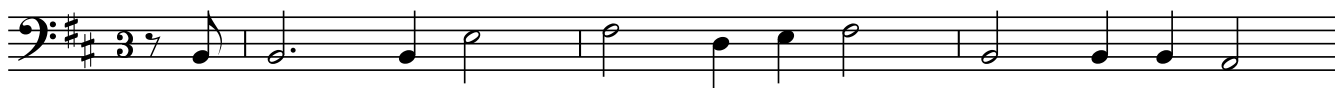
5



13



3. Courant.



4



12



4. Sarabande.



8



16



5. Gavotte.



7



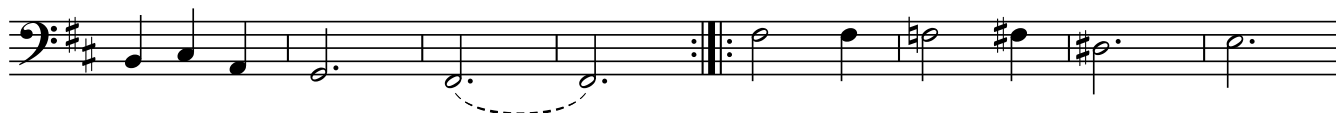
6. Gigue.



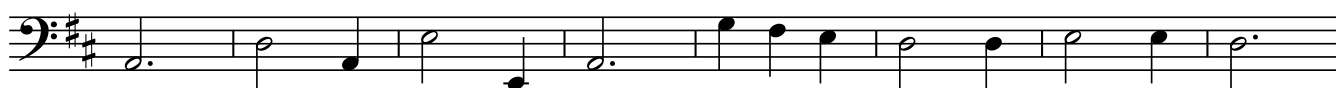
10



18



26



34



[SUITE N° 2 in D major]

7. Sonata.

Adagio



6



11



17



24



31



38



45



52



60

*Piano.*

68

Allegro.



73

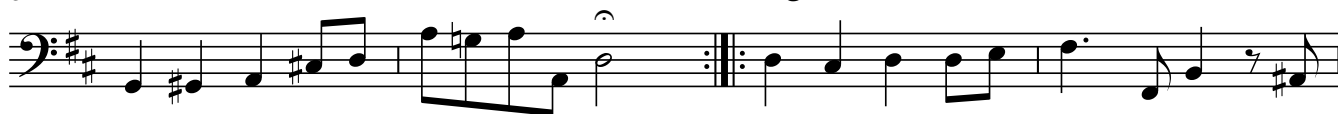


78



82

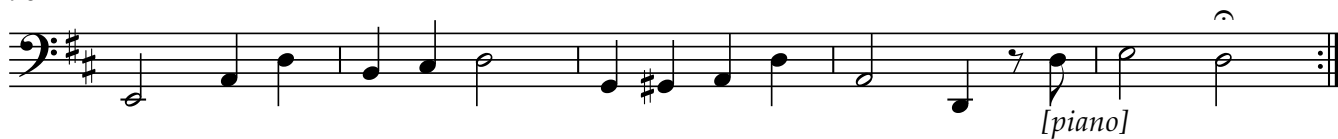
Adagio



86



90



8. Allemanda.



5



14



11. Gavotte.

The bass line of 'The Rose Tree' is written in G major (one sharp) and common time. It consists of two measures. The first measure contains the notes G2 (half note), A2 (quarter note), B2 (quarter note), and C3 (half note). The second measure contains the notes D3 (half note), E3 (quarter note), F#3 (quarter note), and G3 (half note). The piece ends with a double bar line and repeat dots.

[illegible]

12. Gigue.

6

6

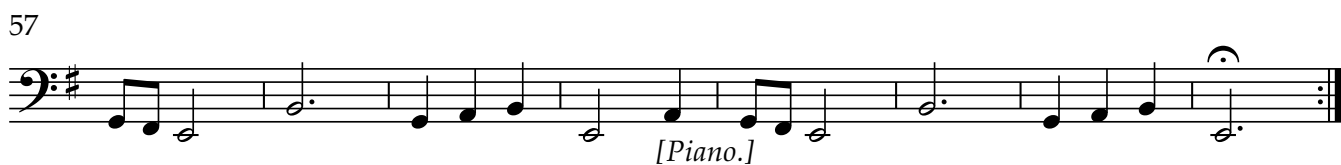
11

15

Musical notation for measure 15, bass clef, key of D major. The measure contains a sequence of eighth and quarter notes: D2, E2, F#2, G2, A2, B2, C#3, D3, E3, F#3, G3, A3, B3, C#4, D4. It ends with a double bar line and repeat dots.

[SUITE N° 3 in e minor]

13. Sonata.



[Piano.]

65 **Lente.**

73



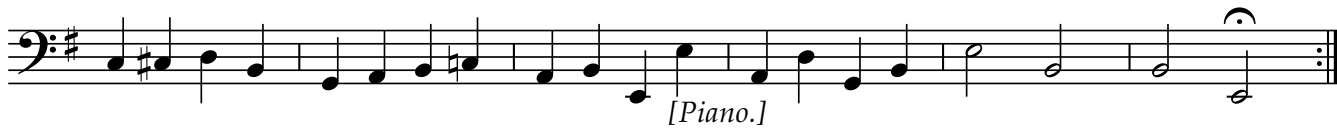
81



88

94 **Adagio.**

99

**14. Allemanda.**

5



14



15. Courant.



17. Gigue.

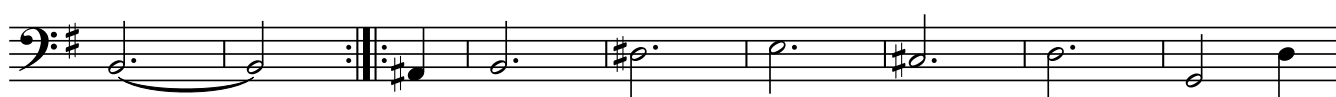
17



8



16



24



32



18. Courant.



4

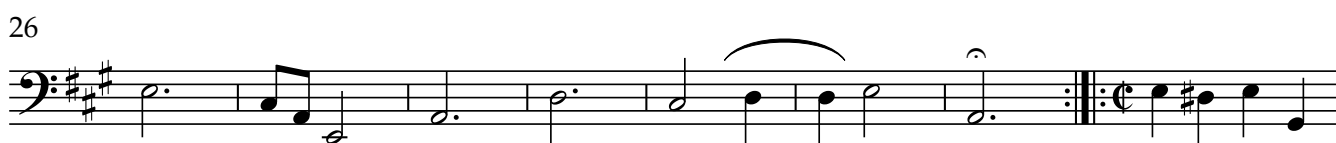


11



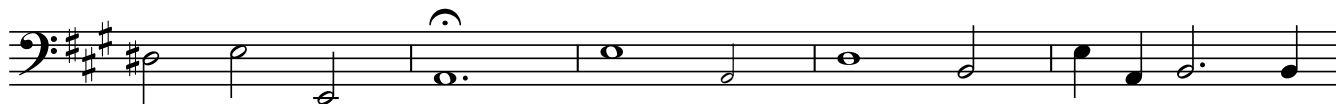
[SUITE N° 4 in A major]

19. Sonata.



57 (*Allegro. ?*)

61

66 **Adagio.**

71



76



80

**20. Allemanda.**

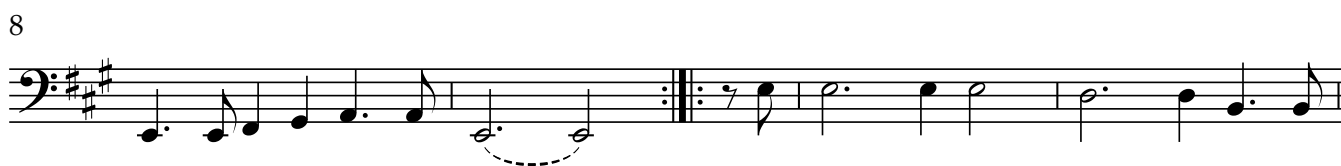
6



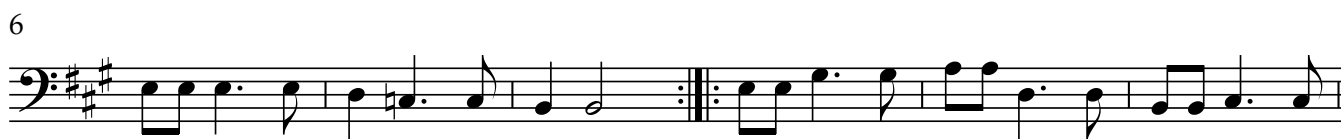
17



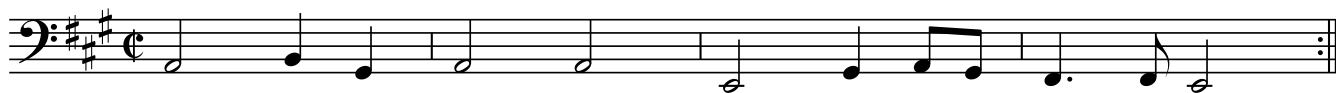
21. Courant.



22. Sarabande.

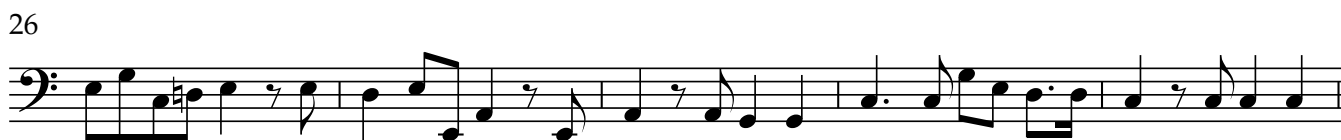


23. Gavotte.



[SUITE N° 5 in C major]

25. Sonata.



43

Presto.

51



60



68

**Adagio.
(Lente.)**

73

**26. Allemanda.**

5



13



27. Courant.



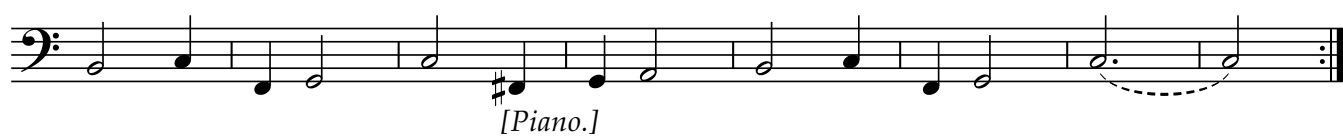
8



15



22



28. Sarabande.



7



13



19



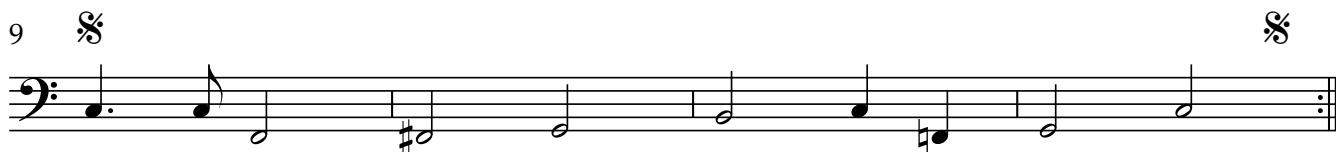
29. Gavotte.



5



9



30. Gigue.



9



18



25



33



40



46



31. Sonata.

A musical staff in bass clef showing the bass line of the song. The melody consists of eighth and quarter notes, with a key signature of one sharp (F#). The notes are: G2, A2, B2, C3, D3, E3, F#3, G3, A3, B3, C4, D4, E4, F#4, G4, A4, B4, C5, D5, E5, F#5, G5, A5, B5, C6, D6, E6, F#6, G6, A6, B6, C7, D7, E7, F#7, G7, A7, B7, C8, D8, E8, F#8, G8, A8, B8, C9, D9, E9, F#9, G9, A9, B9, C10, D10, E10, F#10, G10, A10, B10, C11, D11, E11, F#11, G11, A11, B11, C12, D12, E12, F#12, G12, A12, B12, C13, D13, E13, F#13, G13, A13, B13, C14, D14, E14, F#14, G14, A14, B14, C15, D15, E15, F#15, G15, A15, B15, C16, D16, E16, F#16, G16, A16, B16, C17, D17, E17, F#17, G17, A17, B17, C18, D18, E18, F#18, G18, A18, B18, C19, D19, E19, F#19, G19, A19, B19, C20, D20, E20, F#20, G20, A20, B20, C21, D21, E21, F#21, G21, A21, B21, C22, D22, E22, F#22, G22, A22, B22, C23, D23, E23, F#23, G23, A23, B23, C24, D24, E24, F#24, G24, A24, B24, C25, D25, E25, F#25, G25, A25, B25, C26, D26, E26, F#26, G26, A26, B26, C27, D27, E27, F#27, G27, A27, B27, C28, D28, E28, F#28, G28, A28, B28, C29, D29, E29, F#29, G29, A29, B29, C30, D30, E30, F#30, G30, A30, B30, C31, D31, E31, F#31, G31, A31, B31, C32, D32, E32, F#32, G32, A32, B32, C33, D33, E33, F#33, G33, A33, B33, C34, D34, E34, F#34, G34, A34, B34, C35, D35, E35, F#35, G35, A35, B35, C36, D36, E36, F#36, G36, A36, B36, C37, D37, E37, F#37, G37, A37, B37, C38, D38, E38, F#38, G38, A38, B38, C39, D39, E39, F#39, G39, A39, B39, C40, D40, E40, F#40, G40, A40, B40, C41, D41, E41, F#41, G41, A41, B41, C42, D42, E42, F#42, G42, A42, B42, C43, D43, E43, F#43, G43, A43, B43, C44, D44, E44, F#44, G44, A44, B44, C45, D45, E45, F#45, G45, A45, B45, C46, D46, E46, F#46, G46, A46, B46, C47, D47, E47, F#47, G47, A47, B47, C48, D48, E48, F#48, G48, A48, B48, C49, D49, E49, F#49, G49, A49, B49, C50, D50, E50, F#50, G50, A50, B50, C51, D51, E51, F#51, G51, A51, B51, C52, D52, E52, F#52, G52, A52, B52, C53, D53, E53, F#53, G53, A53, B53, C54, D54, E54, F#54, G54, A54, B54, C55, D55, E55, F#55, G55, A55, B55, C56, D56, E56, F#56, G56, A56, B56, C57, D57, E57, F#57, G57, A57, B57, C58, D58, E58, F#58, G58, A58, B58, C59, D59, E59, F#59, G59, A59, B59, C60, D60, E60, F#60, G60, A60, B60, C61, D61, E61, F#61, G61, A61, B61, C62, D62, E62, F#62, G62, A62, B62, C63, D63, E63, F#63, G63, A63, B63, C64, D64, E64, F#64, G64, A64, B64, C65, D65, E65, F#65, G65, A65, B65, C66, D66, E66, F#66, G66, A66, B66, C67, D67, E67, F#67, G67, A67, B67, C68, D68, E68, F#68, G68, A68, B68, C69, D69, E69, F#69, G69, A69, B69, C70, D70, E70, F#70, G70, A70, B70, C71, D71, E71, F#71, G71, A71, B71, C72, D72, E72, F#72, G72, A72, B72, C73, D73, E73, F#73, G73, A73, B73, C74, D74, E74, F#74, G74, A74, B74, C75, D75, E75, F#75, G75, A75, B75, C76, D76, E76, F#76, G76, A76, B76, C77, D77, E77, F#77, G77, A77, B77, C78, D78, E78, F#78, G78, A78, B78, C79, D79, E79, F#79, G79, A79, B79, C80, D80, E80, F#80, G80, A80, B80, C81, D81, E81, F#81, G81, A81, B81, C82, D82, E82, F#82, G82, A82, B82, C83, D83, E83, F#83, G83, A83, B83, C84, D84, E84, F#84, G84, A84, B84, C85, D85, E85, F#85, G85, A85, B85, C86, D86, E86, F#86, G86, A86, B86, C87, D87, E87, F#87, G87, A87, B87, C88, D88, E88, F#88, G88, A88, B88, C89, D89, E89, F#89, G89, A89, B89, C90, D90, E90, F#90, G90, A90, B90, C91, D91, E91, F#91, G91, A91, B91, C92, D92, E92, F#92, G92, A92, B92, C93, D93, E93, F#93, G93, A93, B93, C94, D94, E94, F#94, G94, A94, B94, C95, D95, E95, F#95, G95, A95, B95, C96, D96, E96, F#96, G96, A96, B96, C97, D97, E97, F#97, G97, A97, B97, C98, D98, E98, F#98, G98, A98, B98, C99, D99, E99, F#99, G99, A99, B99, C100, D100, E100, F#100, G100, A100, B100, C101, D101, E101, F#101, G101, A101, B101, C102, D102, E102, F#102, G102, A102, B102, C103, D103, E103, F#103, G103, A103, B103, C104, D104, E104, F#104, G104, A104, B104, C105, D105, E105, F#105, G105, A105, B105, C106, D106, E106, F#106, G106, A106, B106, C107, D107, E107, F#107, G107, A107, B107, C108, D108, E108, F#108, G108, A108, B108, C109, D109, E109, F#109, G109, A109, B109, C110, D110, E110, F#110, G110, A110, B110, C111, D111, E111, F#111, G111, A111, B111, C112, D112, E112, F#112, G112, A112, B112, C113, D113, E113, F#113, G113, A113, B113, C114, D114, E114, F#114, G114, A114, B114, C115, D115, E115, F#115, G115, A115, B115, C116, D116, E116, F#116, G116, A116, B116, C117, D117, E117, F#117, G117, A117, B117, C118, D118, E118, F#118, G118, A118, B118, C119, D119, E119, F#119, G119, A119, B119, C120, D120, E120, F#120, G120, A120, B120, C121, D121, E121, F#121, G121, A121, B121, C122, D122, E122, F#122, G122, A122, B122, C123, D123, E123, F#123, G123, A123, B123, C124, D124, E124, F#124, G124, A124, B124, C125, D125, E125, F#125, G125, A125, B125, C126, D126, E126, F#126, G126, A126, B126, C127, D127, E127, F#127, G127, A127, B127, C128, D128, E128, F#128, G128, A128, B128, C129, D129, E129, F#129, G129, A129, B129, C130, D130, E130, F#130, G130, A130, B130, C131, D131, E131, F#131, G131, A131, B131, C132, D132, E132, F#132, G132, A132, B132, C133, D133, E133, F#133, G133, A133, B133, C134, D134, E134, F#134, G134, A134, B134, C135

[illegible][illegible][illegible]

The musical notation for the bass staff shows a sequence of notes: G2 (half note), A2 (quarter note), B2 (quarter note), C3 (eighth note), D3 (eighth note), E3 (quarter note), F3 (quarter note), G3 (quarter note), A3 (quarter note), B3 (quarter note), and C4 (half note). The key signature has one flat (B-flat) and the time signature is common time (C).

63



69

**Allegro.
(Presto.)**



76



84



92

Adagio.



32. Allemanda.



6



11



15



19



33. Courant.



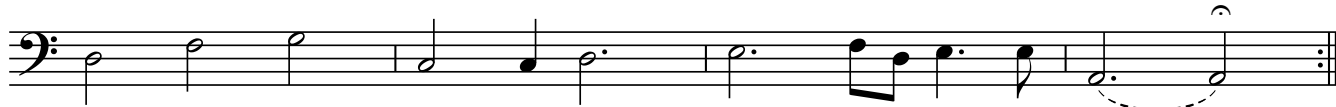
5



8



12



34. Sarabande.



7



12



35. Gavotte.

5

The fifth measure of the bass line, starting at measure 5. It begins with a repeat sign, followed by a half note G2, a quarter note A2, and an eighth note G2. This is followed by a quarter rest, a quarter note F#2, an eighth note E2, and a sixteenth note D2. The measure ends with a repeat sign.

9

The ninth measure of the bass line, starting at measure 9. It begins with a half note G2, a quarter note A2, and an eighth note G2. This is followed by a quarter rest, a quarter note F#2, an eighth note E2, and a sixteenth note D2. The measure ends with a repeat sign.

36. Gigue.

9

17

25

33

41

The image shows a musical score for the song 'The Rose Tree'. It is written in bass clef and 3/4 time. The score consists of five staves. The first staff begins with a treble clef and a key signature of one sharp (F#), then changes to a bass clef. The melody is written in bass clef on the remaining staves. The piece ends with a double bar line and repeat dots.

[SUITE N° 7 in F major]

37. Sonata.



6



11



16



21



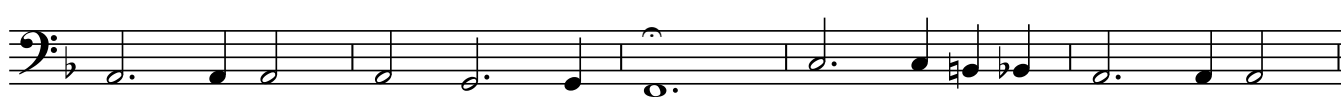
26



31



36



[Piano.]

41

Adagio.



46



52

Allegro.



58



65



72

Lente.



38. Allemanda.



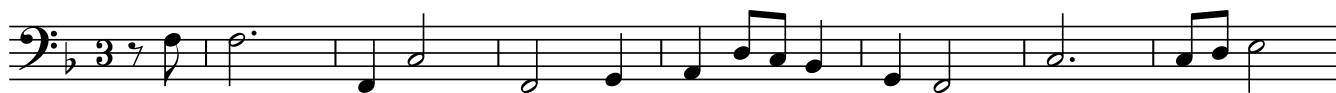
5



10



39. Courant.



8



15



21



40. Sarabande.



9



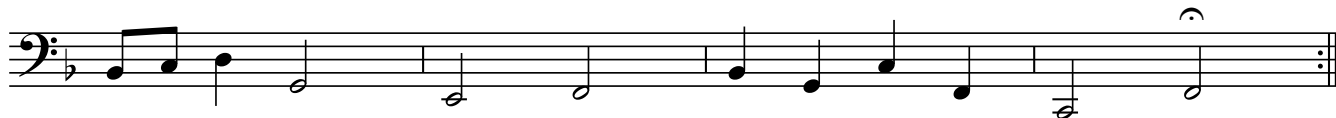
41. Gavotte.



5



9



42. Gigue.



9



23



31

*Piano.*

[SUITE N° 8 in g minor]

43. Sonata.



8



16



24



32



40



48



31

55



45. Courant.



5



8



12



46. Sarabande.



9



47. Gavotte.



6



11



48. Gigue.



8



17



25



33



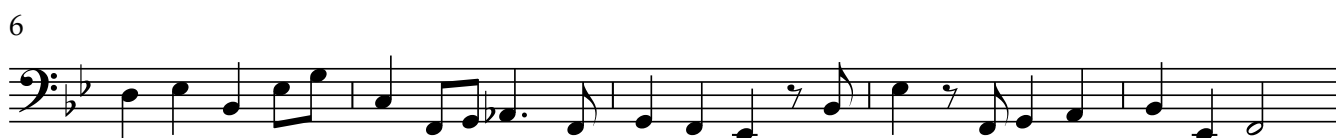
40



[SUITE N° 9 in c minor]

49. Sonata.

Adagio.



44



50



56

Adagio.**50. Allemanda.**

6



16



51. Courant.



5



13



52. Sarabande.



6



11



53. Gavotte.

17



21



25



54. Gigue.

9



17



25



34



43



50



[SUITE N° 10 in Eb major]

55. Sonata.



6



12



18



24



31



39



48



57

Adagio.



63



69



74



56. Allemanda.



5



14



57. Courant.

8

15

Musical notation for the bass line of 'The Rose Tree'. The key signature has two flats (B-flat and E-flat), and the time signature is 3/4. The melody consists of the following notes: G2 (quarter), F2 (quarter), E2 (half), D2 (quarter), C2 (quarter), B1 (quarter), A1 (quarter), G1 (half), F1 (quarter), E1 (quarter), D1 (half).

23

23

Example 23

58. Sarabande.

[illegible]

7

[illegible]

14

14



59. Gavotte.



60. Gigue.

9

18

26

33

41

49

Musical notation for Gigue, measures 1-49. The piece is in 3/8 time, key of B-flat major. Measure 1 starts with a quarter rest, followed by a quarter note B-flat, eighth note D-flat, and eighth note E-flat. Measure 2 has a quarter note F, eighth note G, and eighth note A. Measure 3 has a quarter note B-flat, eighth note C, and eighth note D. Measure 4 has a quarter note E, eighth note F, and eighth note G. Measure 5 has a quarter note A, eighth note B-flat, and eighth note C. Measure 6 has a quarter note D, eighth note E, and eighth note F. Measure 7 has a quarter note G, eighth note A, and eighth note B-flat. Measure 8 has a quarter note C, eighth note D, and eighth note E. Measure 9 has a quarter note F, eighth note G, and eighth note A. Measure 10 has a quarter note B-flat, eighth note C, and eighth note D. Measure 11 has a quarter note E, eighth note F, and eighth note G. Measure 12 has a quarter note A, eighth note B-flat, and eighth note C. Measure 13 has a quarter note D, eighth note E, and eighth note F. Measure 14 has a quarter note G, eighth note A, and eighth note B-flat. Measure 15 has a quarter note C, eighth note D, and eighth note E. Measure 16 has a quarter note F, eighth note G, and eighth note A. Measure 17 has a quarter note B-flat, eighth note C, and eighth note D. Measure 18 has a quarter note E, eighth note F, and eighth note G. Measure 19 has a quarter note A, eighth note B-flat, and eighth note C. Measure 20 has a quarter note D, eighth note E, and eighth note F. Measure 21 has a quarter note G, eighth note A, and eighth note B-flat. Measure 22 has a quarter note C, eighth note D, and eighth note E. Measure 23 has a quarter note F, eighth note G, and eighth note A. Measure 24 has a quarter note B-flat, eighth note C, and eighth note D. Measure 25 has a quarter note E, eighth note F, and eighth note G. Measure 26 has a quarter note A, eighth note B-flat, and eighth note C. Measure 27 has a quarter note D, eighth note E, and eighth note F. Measure 28 has a quarter note G, eighth note A, and eighth note B-flat. Measure 29 has a quarter note C, eighth note D, and eighth note E. Measure 30 has a quarter note F, eighth note G, and eighth note A. Measure 31 has a quarter note B-flat, eighth note C, and eighth note D. Measure 32 has a quarter note E, eighth note F, and eighth note G. Measure 33 has a quarter note A, eighth note B-flat, and eighth note C. Measure 34 has a quarter note D, eighth note E, and eighth note F. Measure 35 has a quarter note G, eighth note A, and eighth note B-flat. Measure 36 has a quarter note C, eighth note D, and eighth note E. Measure 37 has a quarter note F, eighth note G, and eighth note A. Measure 38 has a quarter note B-flat, eighth note C, and eighth note D. Measure 39 has a quarter note E, eighth note F, and eighth note G. Measure 40 has a quarter note A, eighth note B-flat, and eighth note C. Measure 41 has a quarter note D, eighth note E, and eighth note F. Measure 42 has a quarter note G, eighth note A, and eighth note B-flat. Measure 43 has a quarter note C, eighth note D, and eighth note E. Measure 44 has a quarter note F, eighth note G, and eighth note A. Measure 45 has a quarter note B-flat, eighth note C, and eighth note D. Measure 46 has a quarter note E, eighth note F, and eighth note G. Measure 47 has a quarter note A, eighth note B-flat, and eighth note C. Measure 48 has a quarter note D, eighth note E, and eighth note F. Measure 49 has a quarter note G, eighth note A, and eighth note B-flat. The piece ends with a double bar line and repeat sign.